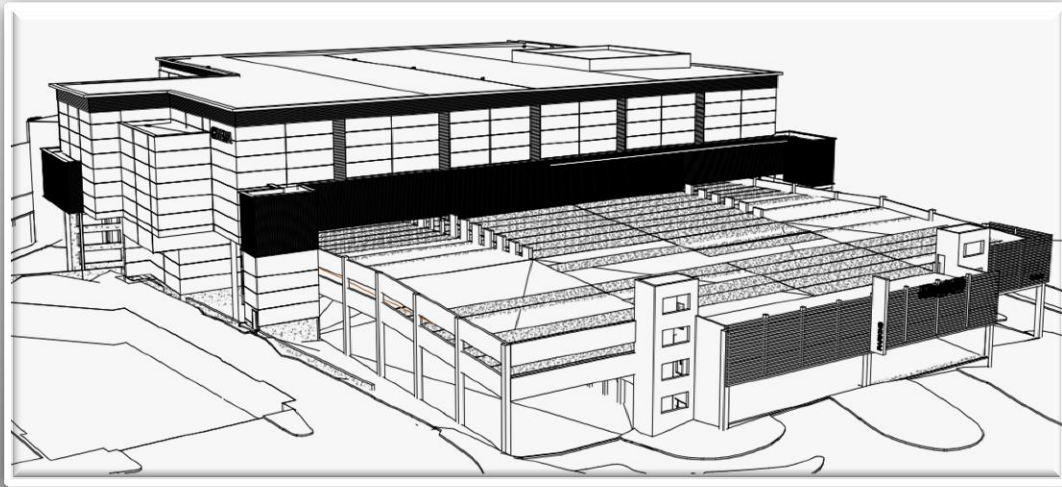


Cinema – Dining Terrace Expansion

Suburbia, USA



Project Information

Owner: Anonymous

GC: The Whiting-Turner Contracting Company

Number of Stories: 3 Above Ground

Negotiated GMP: \$50,223,763.00

Architect: Gensler

Size: 91,500 GSF

Architecture

This project incorporates a 16 screen cinema on top of an existing parking garage and an updated foot court. The new entrance and added restaurants use a metal panel and glass facade that complements the metal panel, EIFS, and glass facade of the entire cinema. The modifications to the parking garage and food court combined with the new cinema create a casual yet upscale experience.

Structural

Extensive work was done to the existing parking garage foundations using a combination of micropiles with pilecaps, sandwich footing with threadbars, and spread footings. The foundations then support the structural steel with composite beams and the massive concrete shear walls that support the entire cinema and food court additions.

Electrical

There is a 750 kVA transformer for the existing mall and a 150 kVA transformer for the fire pump. The cinema's electrical system will tie into the existing mall system but it is still being designed at this point.

Mechanical

The food court's existing Variable Air Volume system and the concourse's Constant Volume system will remain with small modifications to the ductwork and diffusers. The cinema's mechanical system is still being designed at this time.

<http://www.engr.psu.edu/ae/thesis/portfolios/2014/njk5086/index.html>

